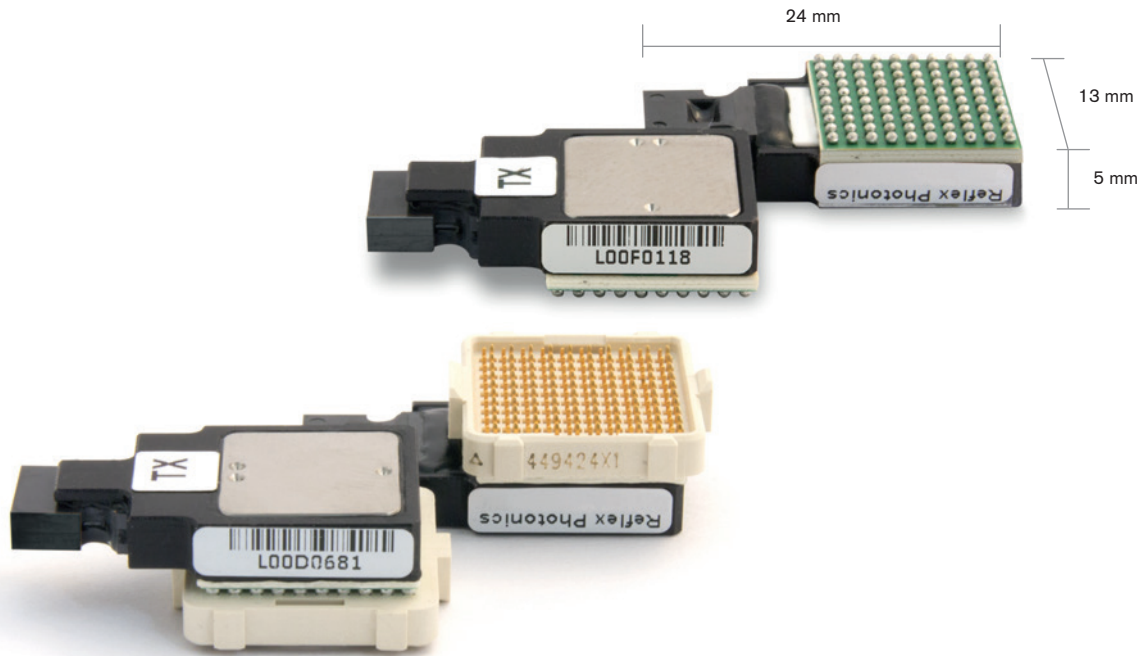


REFLEXPHOTONICS®

The most rugged high-performance embedded parallel optics.



LightABLE 40G and 120G

Key advantages

- **Small:** Less than 5 mm high
- **Rugged:** MIL-STD 883 shock and vibration qualified
- **Sealed:** Moisture and thermal shock resistant
- **Storage temperature:** -57°C to 125°C
- **Performance:** 10 Gbps/ch at -40°C to 85°C
- **BER:** As low as 10^{-15}
- **Sensitivity:** -12 dBm
- **Proven:** Thousands used in aerospace and defense applications
- **Low power consumption:** 100 mW/ch

LightABLE product summary

The *LightABLE*™ embedded optical modules are the most rugged devices offering high bandwidth (greater than 120 Gbps) in a chip-size package. Channels are independent and support data-agnostic protocols, such as Ethernet, Fiberchannel, Infiniband and PCIe. *LightABLE* are used extensively in aerospace and defense for phased array radars, high resolution sensors, and high performance computers applications.

Configurations

- SR12: 12 TX or 12 RX
- SR4: 4 TRX
- SR12: 12 TRX (Q1/2017)

40G and 120G *Light*ABLE features

- 4 TX plus 4 RX channels per device (40G)
- 12 TX or 12 RX channels per device (120G)
- Multimode 850 nm wavelength laser
- Over 100 m reach on OM3 ribbon fiber
- Standard MT parallel fiber connector
- Surface mountable or pluggable
- RoHS or tin-lead
- Equalizer, pre-emphasis, adjustable output
- Monitoring: LOS, RSSI, temperature etc.
- Integrated microcontroller
- Available in commercial (0°C to 70°C), extended (-15°C to 85°C), and industrial (-40°C to 85°C) grade temperature ranges

*Light*ABLE ordering information

Part Number	Product Description	Channels	Bandwidth (Gbps/ch)	Mounting	Soldering	Operating Temperature (°C)	Availability
LMX04P4183323AA	SR4 transceiver	4	10.3125	Pluggable	RoHS	-40 to 85	General availability
LMX04P4182323AA	SR4 transceiver	4	10.3125	Surface mount	Tin-lead	-40 to 85	General availability
LMT12P4183310AA	SR12 transmitter	12	10.3125	Pluggable	RoHS	-40 to 85	General availability
LMT12P4182310AA	SR12 transmitter	12	10.3125	Surface mount	Tin-lead	-40 to 85	General availability
LMR12P4183303AA	SR12 receiver	12	10.3125	Pluggable	RoHS	-40 to 85	General availability
LMR12P4182303AA	SR12 receiver	12	10.3125	Surface mount	Tin-lead	-40 to 85	General availability

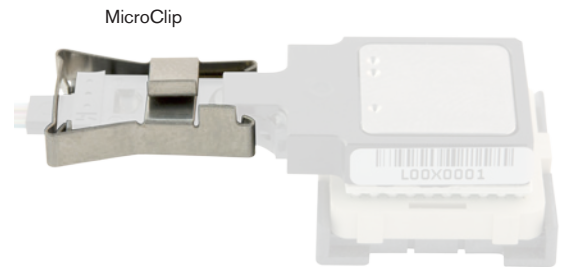
Call for other module options such as commercial and extended temperature or cables.

MicroClip

Reflex Photonics' MicroClip™ is a small lightweight clip connecting an MT connector cable to the *Light*ABLE. *Light*ABLE (40G and 120G) have proven they can withstand a 1 kg live traffic fiber pull test (10 Gbps/ch) on a 12-fiber ribbon cable pigtail mated to the proprietary MicroClip MT ferrule design, without any signal performance degradation.

Features

- Pull force: 1 kg (twice the Telecordia GR-468 requirements)
- Lightweight, low profile, and simple assembly



MicroClip connectors offer a secure connection between the *Light*ABLE module and the fiber cable.

THE *Light* on Board® Company

www.reflexphotonics.com

Reflex Photonics Inc.

16771, Chemin Ste-Marie
Kirkland, QC
H9H 5H3, Canada

For information on Reflex Photonics products, contact:

sales@reflexphotonics.com
+1.514.842.5179 (Montreal)
+1.408.715.1781 (USA)



Reflex Photonics is certified to ISO 9001

*All specifications are subject to change without notice. All brands are trademarks or registered trademarks of their respective owners and third party entities. Copyright © 2017 by Reflex Photonics.
LightABLE_LTR_201704C